

KCI Program Applications 25-26

Thank you for your interest in KCI Programs for the 2025 to 2026 school year! We will be offering three programs/courses: AI Capstone Program, SPACE, and STEAM Leadership.

Beginning in Spring 2025 (Late March 2025)

AI Capstone Program (April 14, 2025 - June 22, 2025)

SPACE (April 26, 2025 - March 14, 2026)

Beginning in Summer 2025 (Late June 2025)

STEAM Leadership (June 20, 2025 - March 7, 2026)

Deadlines

Spring 2025 Courses/Programs - Apply by Sunday, March 2, 2025

Summer 2025 Programs - Apply by Sunday, April 27, 2025

Program Dates

- **AI Capstone Program** will be asynchronous online along with opportunities to engage in weekly live office hours throughout the course. There will not be any mandatory synchronous meetings for this program. The course will run from April 14, 2025 to June 22, 2025.
- **SPACE** will be entirely in person at the Krause Center in Los Altos Hills, CA on Saturday, April 26; Saturday, May 17 ; Saturday, June 14; Monday, July 21-Thursday, July 24 with online coursework and four Saturday follow-up meetings on Saturday, October 18; Saturday, December 13; Saturday, January 31, 2026; Saturday, March 14, 2026 in the 2025-2026 school year to be determined. SPACE Days will run from 10am to 4pm.
- **STEAM Leadership** will be held at the Krause Center for Innovation from Friday, June 20 to Thursday, June 26 with optional team building days on Saturday, June 21 and Sunday, June 22. Follow-up days will be on Saturday, October 18 (virtual); Saturday, December 6 (in-person); Saturday, January 24, 2026 (in-person); Saturday, March 7, 2026 (in-person). STEAM days will run from 9 am to 3 pm.

If you wish to review program details before beginning, you can do so [on the KCI website](#). You can also see a preview of the application [HERE](#).

Justin and the KCI Team
Director of Programs and Partnerships
jsewell@krauseinnovationcenter.org

* Indicates required question

1. Email *

2. Your FIRST Name *

3. Your LAST Name *

4. How did you hear about the KCI 25-26 Programs? *

Mark only one oval.

- Colleague Recommendation
- Email
- Social Media
- At a Conference
- Web Search
- At a KCI event or program
- Other: _____

About You

Please provide your personal information below.

5. Work Email Address *

6. Personal Email Address *

7. What is the best phone number to reach you? *


8. Home Street Address (Including Apt. or Unit #) *

9. City *

10. State (to be considered for the grant-funded scholarship, you must be a CA resident) *

11. Postal Code *

12. Gender *

 Dropdown

Mark only one oval.

Female

Male

Non-binary

Prefer not to say

13. Ethnicity *

Mark only one oval.

- American Indian or Alaska Native
- Asian
- Black or African American
- Hispanic or Latino
- Native Hawaiian
- Other Pacific Islander
- White
- Prefer not to say
- Other: _____

You As An Educator

Please let us know about your prior teaching experience.

14. Current Job title *

If you will be changing jobs, please let us know what your job will be for the 25-26 school year.

15. Current School District *

16. Current School Site *

17. Is your school considered Title 1? *

Mark only one oval.

- Yes
- No
- Unsure
- Not Applicable

18. Number of Years Working in Education *

19. Subject Area/s (Check all that apply) *

Check all that apply.

- Multiple subjects (elementary school)
- Math
- Science
- Career and Technical Education
- English/writing/literature
- Social studies/history
- World languages (foreign languages)
- Visual arts
- Performing arts
- Physical education/health
- Special education
- AVID/Leadership
- Site and/or district administration
- TOSA/Site Coach
- Technology
- Other: _____

20. Grade/Age Levels You Currently Support (Check all that apply) *

Check all that apply.

- I'm a pre-service teacher
- Primary (TK-2)
- Elementary (3-5)
- Middle School (6-8)
- High School (9-12)
- Community College or University
- Adult Education
- Site Administration/ TOSA
- District Administration/ TOSA
- Library/ Makerspace/Media Specialist
- Other: _____

Open Ended Questions

Please try to limit your answers to 300 words or less. However, please understand that we are looking for quality of answer, so if the question below consists of only a few words, we will not consider you to be a serious candidate and will discard your application.

You are encouraged to compose your answers in another document and then copy/paste them here so that you don't risk losing your responses.

21. Please describe your personal teaching/education philosophy. *

22. Who are your learners and what do you love about teaching this particular group? *

23. KCI Programs are more than just PD. We deliberately build cohorts with the intention of developing a community of learners and a network of support that lasts well beyond the program dates. *

What unique characteristics would you bring to a cohort? How do you like to participate and contribute within learning communities?

There are no wrong answers here. This is an opportunity for you to tell us the best parts of who you are as a person. Don't be afraid to show off!

Program Selection

Please select a program below to go to the program-specific application questions. If you wish to apply to more than one program, you will be able to come back to this page afterwards and select a different program.

24. Which program would you like to apply to? *

You will be able to come back to this page later if you want to apply to more than one program.

Mark only one oval.

- AI Capstone Course *Skip to question 25*
- SPACE *Skip to question 33*
- STEAM Leadership *Skip to question 39*

AI Capstone Course Specific Questions

AI Capstone Course will be asynchronous along with opportunities to engage in office hours throughout the course. There won't be designated days to meet as a cohort online or in-person.

Program Description

Please read the program information below in its entirety. You can also view it in a new tab here.

25. I understand that the AI Capstone Course will be an asynchronous cohort with optional office hours that will take place online. *

Mark only one oval.

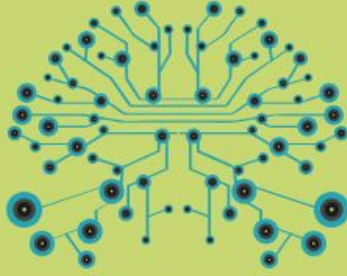
- Yes
- I'm not interested in participating in the AI Capstone Course

26. I understand that, while the AI Capstone course is asynchronous, weekly participation and engagement with both coursework and peers via the Canvas learning management system and other collaboration tools is required, with assignments and activities due each week of the course. *

Mark only one oval.

- Yes
- I'm not interested in participating in the AI Capstone Course

Description of AI Capstone Courses



THE AI LEARNING JOURNEY

Major themes for each part of the KCI's Artificial Intelligence Capstone

EMPOWER W/ AI

LINC 51C & LINC 51D - 6 units

This one-quarter AI Capstone will integrate theory and practice throughout the two-course experience. Learn to **empower** with AI through:

- **Exploration of the Evolution of AI:** Understand how AI has developed and its current and future applications in education.
- **Enhancing Ethical Awareness:** Address critical issues like data privacy, bias, and equity in AI implementations.
- **Designing AI-Enhanced Curricula:** Create lesson plans that leverage AI to improve teaching and learning outcomes.
- **Engaging in Hands-On Practice:** Use tools like machine learning and natural language processing to build confidence and real-world AI literacy.
- **Troubleshooting AI Tools:** Develop practical problem-solving skills to overcome technical challenges.
- **Navigating Institutional Barriers:** Learn how to address obstacles to AI adoption and foster support within your school or district.

THEORY & PRACTICE

You will:

- Understand the history principles of AI technology and current Large Language Models while also learning how to evaluate the strengths and weaknesses of current AI technology in education.
- Analyze ethical implications of AI in education including data privacy, bias, and equity while developing AI-driven personalized learning experiences for students and other educators.
- Implement AI literacy activities with learners and assess AI-related policies and practices on a National, State, and local level while evaluating the impact of AI on learning outcomes including methods for assessing the effectiveness of AI-enhanced teaching practices, data collection, and reporting.

You will take two courses, but those courses will be integrated so that you will better understand Artificial Intelligence theory and practice so you can bring AI best practices to your school, district, and county.



THE KRAUSE CENTER FOR INNOVATION
[HTTPS://KRAUSEINNOVATIONCENTER.ORG](https://krauseinnovationcenter.org)

27. Based on the description of the program above/on the KCI website, please describe why you want to participate in this program and how you plan to use what you learn. *

Please limit your response to 300 words or less.

28. Are you applying to this program as a part of a team? *

Mark only one oval.

Yes

No

29. If so, please name the other people on your team.

Please note that each person on your team must submit **their own individual** application!

30. The AI Capstone Course will have learner affinity groups to encourage sharing and connection among educators with similar groups of learners. Please select from the list below the learning group that most describes your situation. *

 Dropdown

If you fit into more than one category or none of the groups directly applies to your situation, please select the closest group or the one you are most interested in and add any context below.

Mark only one oval.

Teachers of Primary/Elementary Grades

Teachers of Middle/High School STEM Subjects

Teachers of Middle/High School Arts/Humanities Subjects

Teachers of Adults (Adult Ed, College, Etc.)

TOSAs/Administrators/Support Staff for Primary/Elementary Grades

TOSAs/Administrators/Support Staff for Middle/High School/Adult Ed/College

31. If there is any need to clarify your answer to the above (such as an interest in more than one group), please provide this information below.

32. Would you like to apply to another KCI program? *

Mark only one oval.

- Yes, please take me back to the program selection page *Skip to question 24*
- No, please take me to the final confirmations and agreements *Skip to question 45*

SPACE- Specific Questions

SPACE will be entirely in person at the Krause Center in Los Altos Hills, CA on Saturday, April 26; Saturday, May 17; Saturday, June 14; Monday, July 21-Thursday, July 24; Saturday, October 18; Saturday, December 13; Saturday, January 31, 2026; Saturday, March 14, 2026. All days will be from 10 AM to 4 PM.

Program Description

Please read the program information below in its entirety. You can also [view it in a new tab here](#).

ARE YOU READY TO TAP INTO YOUR INNOVATIVE POTENTIAL WITH KCI'S

SPACE

PROGRAM?



Here at the **Krause Center for Innovation** we specialize in professional learning for educators. The **SPACE Program** is designed for K-14 teachers who want to grow as Makerspace Coordinators at their sites. **SPACE – Supporting Prototyping And Creativity in Education** – participants are those interested in honing their maker skills or seeking employment in fabrication laboratories and makerspaces within community centers, libraries, and educational settings. The program provides instruction and support for **building models and prototypes, strategies to spark innovation and invention, and creative problem-solving and collaboration.**

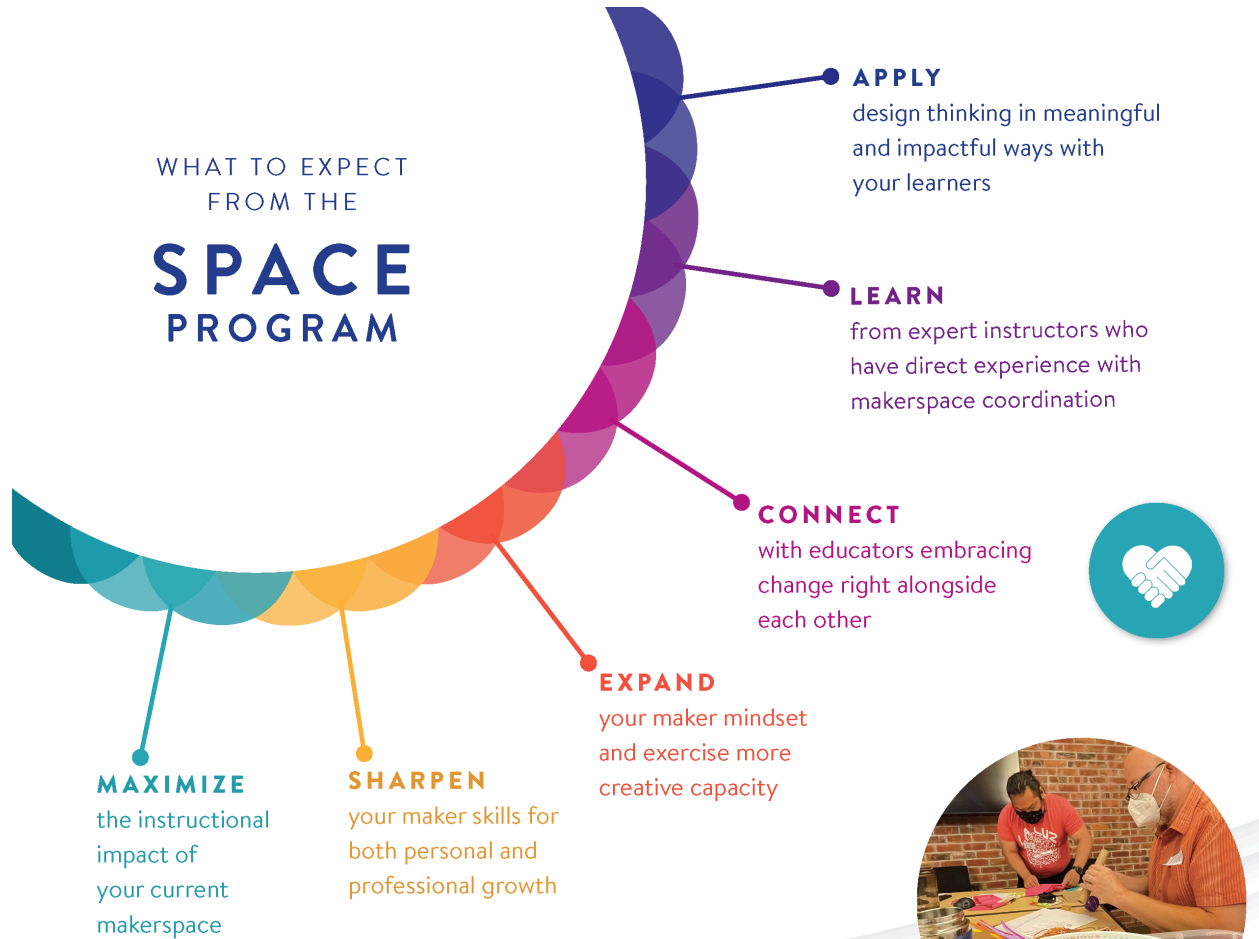
Makerspace

EXPLORE • THINK • MAKE
TINKER • COLLABORATE
LEARN • DESIGN



KRAUSE CENTER *for* **INNOVATION**

WHAT TO EXPECT FROM THE SPACE PROGRAM



LEARN MORE ABOUT KCI'S SPACE PROGRAM AND APPLY FOR THE NEXT COHORT!



[KRAUSEINNOVATIONCENTER.ORG/SPACE](https://www.krauseinnovationcenter.org/space)

WHAT IS THE SPACE PROGRAM?

The SPACE Program invites participants to be makers, recognizing and practicing creativity in everyday life. Each activity and project includes a focus on managing learning experiences that empower students to think outside the box and be problem solvers.

There are three phases of the SPACE Program: 1) Design Thinking, 2) Computational Thinking, and 3) Design Challenges. Each phase is framed by KCI's **Ten Maker Mindsets** which include:

- **Wonder:** Notice inspiration and where it comes from.
- **Tinker:** Mess around with things to see what they do.
- **Collaborate:** Share your ideas and work with others.
- **Design:** Organize your thoughts and ideas into specific solutions.
- **Prototype:** Build models to test them out, revising as needed.
- **Solve Problems:** Use thinking routines to analyze situations and develop solutions.
- **Take Risks:** Try new things, even if you aren't sure they will work.
- **Celebrate Failure:** Embrace fails and share them so that everyone can learn and celebrate with you.
- **Extend:** Consider where you can apply what you are learning to other parts of your life.
- **Have Fun:** Enjoy the process and embrace the mess.



WHAT PEOPLE ARE SAYING

“
The SPACE Program activities were wonderful and engaging—challenging for adults yet still accessible to younger children. Content was relevant and I appreciated the time to play and explore!

“
Thinking about design from an empathetic standpoint has provided a more purposeful approach to my work and my art.

“
This was my first experience with KCI, and I loved every minute of it! I would definitely recommend to friends and colleagues. I'm using my new skills in the classroom every day.

Our **SPACE Program** welcomes participants throughout the state of California who serve K-14 learners in all capacities!



Additionally, each SPACE participant earns a California Certificate of Achievement as a Makerspace Coordinator plus the following upon program completion:

- 18 continuing education units
- 3-year access pass to KCI's Makerspace

WHAT MAKES THE SPACE PROGRAM UNIQUE?

KCI's SPACE Program offers hands-on learning that empowers educators to participate as makers and experience the potential of a maker learning environment firsthand. As participants move through the activities and projects, they are guided by expert instructors to consider the roles of the teacher and makerspace coordinator in the implementation of maker education in their environments. Participants receive direct equipment training on 3D printers, laser cutters, vinyl cutters, and more. Creativity and play infuse every activity and are central to the learning experiences both in the program and back in the school communities.



KRAUSEINNOVATIONCENTER.ORG/SPACE

- 33. I understand that SPACE will be entirely in person at the Krause Center in Los Altos Hills, CA on Saturday, April 26; Saturday, May 17; Saturday, June 14; Monday, July 21-Thursday, July 24; Saturday, October 18; Saturday, December 13; Saturday, January 31, 2026; Saturday, March 14, 2026. All days will be from 10 AM to 4 PM. *

Mark only one oval.

- Yes
- I'm not interested in participating in SPACE

- 34. Based on the description of the program above/on the KCI website, please describe why you want to participate in this program and how you plan to use what you learn. *

Please limit your response to 300 words or less.

- 35. Are you applying to this program as a part of a team? *

Mark only one oval.

- Yes
- No

- 36. If so, please name the other people on your team.
*Please note that each person on your team must submit **their own individual** application!*

37. I understand and agree to attend and participate in ALL DATES of the program unless a personal or family emergency occurs. *

Please review the dates above and make absolutely sure you can commit to them before selecting "Yes"! The SPACE program meets on ALL listed dates.

Mark only one oval.

Yes

38. Would you like to apply to another KCI program? *

Mark only one oval.

Yes, please take me back to the program selection page *Skip to question 24*

No, please take me to the final confirmations and agreements
Skip to question 45

STEAM- Specific Questions

STEAM Leadership will be held at the Krause Center for Innovation from Friday, June 20 to Thursday, June 26, 2025 with optional team building days on Saturday, June 21 and Sunday, June 22. Follow-up days will be on Saturday, October 18 (virtual); Saturday, December 6 (in-person); Saturday, January 24, 2026 (in-person); Saturday, March 7, 2026. STEAM days will run from 9 am to 3 pm.

Program Description

Please read the program information below in its entirety. You can also [view it in a new tab here](#).

ARE YOU READY TO LEAN INTO YOUR

STEAM

LEADERSHIP IDENTITY?



Here at the **Krause Center for Innovation** we specialize in professional learning for educators. The **STEAM Leadership Program** is designed for pre-service and in-service teachers who want to grow as STEAM leaders in their schools, districts, and/or counties. The program focuses on two topics: STEAM integration and relevant activities through a **DEI (Diversity, Equity & Inclusion)** lens so that all students feel like they can achieve success. Under the guidance of our program instructors, participants dive into a variety of **hands-on activities and book studies** focused on DEI principles, empowering readers to think critically about community outreach, social-emotional learning, and instructional materials.



SCIENCE TECHNOLOGY ENGINEERING ART MATH



KRAUSE CENTER *for* **INNOVATION**

WHAT TO EXPECT FROM THE

STEAM LEADERSHIP PROGRAM



LEARN MORE ABOUT KCI'S STEAM LEADERSHIP PROGRAM AND APPLY FOR THE NEXT COHORT!



[KRAUSEINNOVATIONCENTER.ORG/STEAM](https://www.krauseinnovationcenter.org/steam)

WHAT IS THE STEAM LEADERSHIP PROGRAM?

The STEAM Leadership Program is about leaning into our individual strengths and identities and learning from each other. With a focus on equity leadership, all participants in the program have an opportunity to showcase their passions and expertise in order to help support the cohort with cohesive STEAM integration. Through personal identity exploration we gain a deeper understanding about ourselves in order to develop our STEAM identities so we can assist our students and staff in their own identity journey.



Additionally, each STEAM Leadership participant earns a California Certificate of Achievement as a STEAM Instructional Leader (plus 12 continuing ed units) upon program completion.

WHAT PEOPLE ARE SAYING

WHAT MAKES STEAM LEADERSHIP UNIQUE?

The STEAM Leadership Program is unique because it is built from the strength of the participants. The participants experience STEAM activities through multiple lenses: equity, identity, and social-emotional learning. Participants have an opportunity to learn as students and debrief as educators, with space to discuss, adapt and adjust the various activities for their audience. They are given the gift of time to engage in a passion project in order to deepen their knowledge and improve their craft. Thoughtful and courageous conversations, the ability to showcase strengths and learn from each other, and sharing space with like-minded educators are the reasons why this program makes an impact on educators and their learners.

“ I valued the conversations we had to support social-emotional learning, ideas to support inclusion, and the opportunity to better focus on who I am so I can be a better person for my students. ”

“ I have heard the word ‘equity’ for a long time, but this course gave me clarity and a framework for bringing equity into my classroom. ”

“ STEAM is not my strong suit, but this program really increased my confidence! I’m already trying new things out in class with my kids. This training was so inspirational and motivating. ”

STEAM PILLARS

- Integration
- Application
- Leadership
- Learning
- Identity



STEAM Leadership welcomes participants throughout the state of California who serve K-14 learners in all capacities!

[KRAUSEINNOVATIONCENTER.ORG/STEAM](https://www.krauseinnovationcenter.org/steam)

39. I understand that STEAM Leadership will be held at the Krause Center for Innovation from Friday, June 20 to Thursday, June 26 with optional team building days on Saturday, June 21 and Sunday, June 22. Follow-up days will be on Saturday, October 18 (virtual); Saturday, December 6 (in-person); Saturday, January 24, 2026 (in-person); Saturday, March 7, 2026 (in-person). STEAM days will run from 9 am to 3 pm. STEAM days will run from 9 am to 3 pm. *

Mark only one oval.

- Yes
- I'm not interested in participating in STEAM

40. Based on the description of the program above/on the KCI website, please describe why you want to participate in this program and how you plan to use what you learn. *

Please limit your response to 300 words or less.

41. Are you applying to this program as a part of a team? *

Mark only one oval.

- Yes
- No

42. If so, please name the other people on your team.

Please note that each person on your team must submit their own individual application!

43. I understand and agree to attend and participate in ALL DATES of the program unless a personal or family emergency occurs. *

Please review the dates above and make absolutely sure you can commit to them before selecting "Yes"!

Mark only one oval.

Yes

44. Would you like to apply to another KCI program? *

Mark only one oval.

Yes, please take me back to the program selection page *Skip to question 24*

No, please take me to the final confirmations and agreements
Skip to question 45

Confirmations and Agreements

Please confirm your understanding and commitment to complete the general KCI Program requirements.

45. I understand that I will need to enroll in Foothill College and will be required to take part in an orientation at a specified time and date on a program by program basis. *

Mark only one oval.

Yes

46. I understand and agree that if I am unable to make a day, that I am responsible for any and all work that was completed and agree to follow-up with an instructor. *

Mark only one oval.

Yes

47. I understand and agree that if I do need to miss a meeting that I will give at least two weeks notice to the program director. *

Mark only one oval.

Yes

48. I understand and agree to attend the KCI graduation/showcase in-person or virtually on Saturday, April 25, 2026. *

Mark only one oval.

Yes

49. I understand and agree that if I am unable to complete the program for any reason, the Krause Center for Innovation has authority to ask for reimbursement for any unit and enrollment fees that have accrued. *

Mark only one oval.

Yes

50. I understand and agree that I will need to pay a \$75, non-refundable fee to participate in the program (after acceptance is sent and willingness to participate has been agreed upon). *

Mark only one oval.

Yes

51. I agree that all information provided is true. *

Mark only one oval.

Yes

This content is neither created nor endorsed by Google.

Google Forms

